

TAP2019

SCCOG

Transportation Alternatives Program Solicitation



Program Overview

SCCOG



Eligibility

- Who: Municipalities - CEO signs application
- What: Planning, Design and Construction
- Why: Transportation

Project Types:

- On-road and off-road trail facilities for pedestrians, bicyclists, and other non-motorized forms of transportation.
- Provide safe routes for non-drivers, including children, older adults, and individuals with disabilities
- Trails on abandoned railroad corridors
- Construction of turnouts, overlooks and viewing areas
- Community improvement activities including: Inventory, control, or removal of outdoor advertising
- Historic preservation and rehabilitation of historic transportation facilities
- Freeway to Boulevard conversion

How to win!

SCCOG

Purpose and Need

Why is this the best use of limited federal funding for bikes/peds/transit?

Why is your project better than the other applications?

Demand

Safety

Connections

Environmental Justice

Public support

Vulnerable Groups

Building on past success

Modal Connection

Description

Logical termini

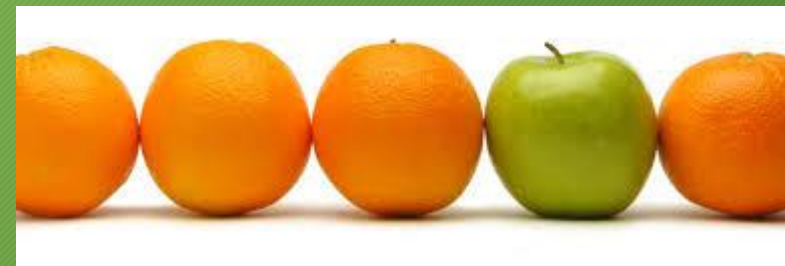
Cross Section

Standards used

Users accommodated

Flashy graphics

Just kidding!



There is a catch...

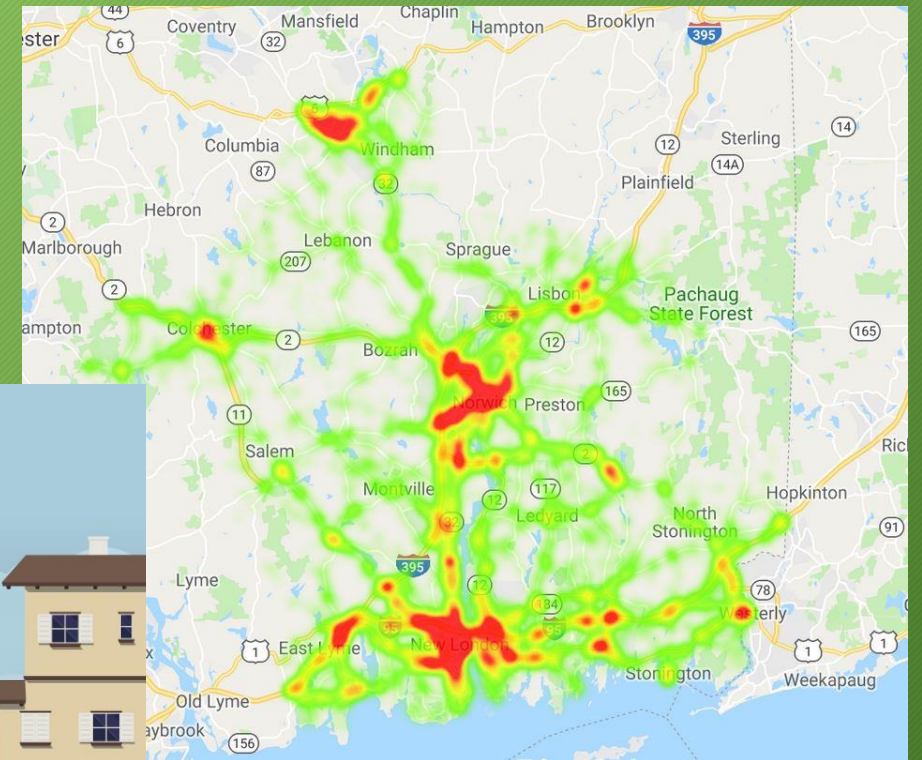
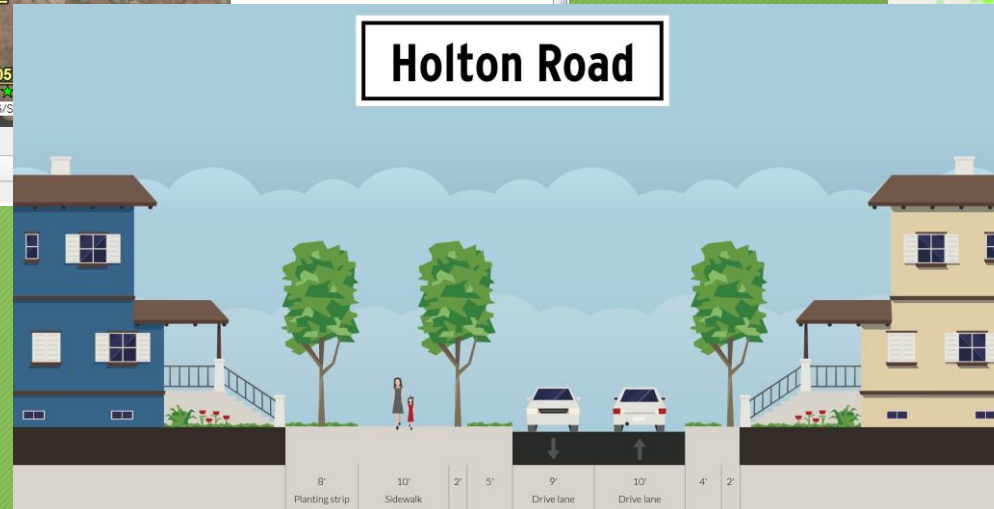


- * 20% cash match.
- * Expenditures made prior to authorization are not part of match.
- *DOT preference for federal participation in Construction only.

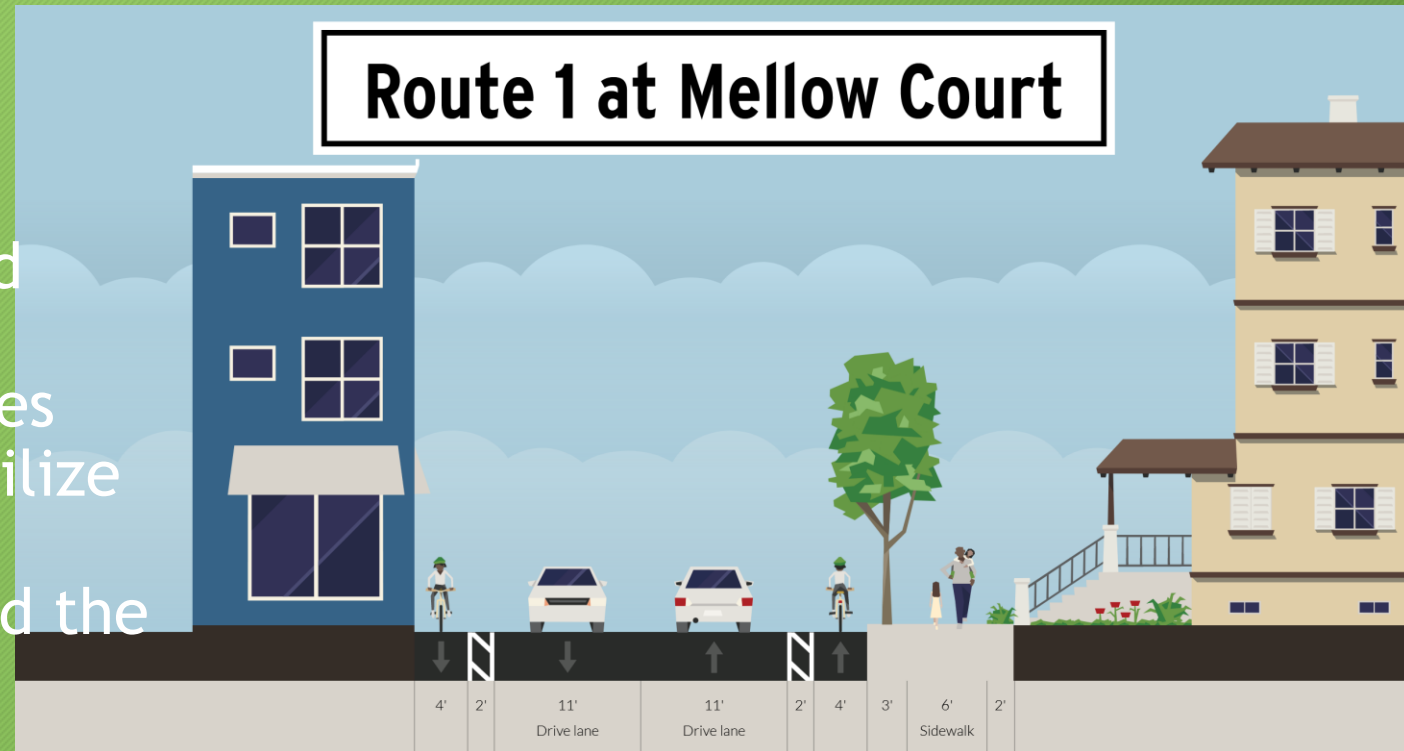
SCCOG

Tools to Get the Job Done

SCCOG



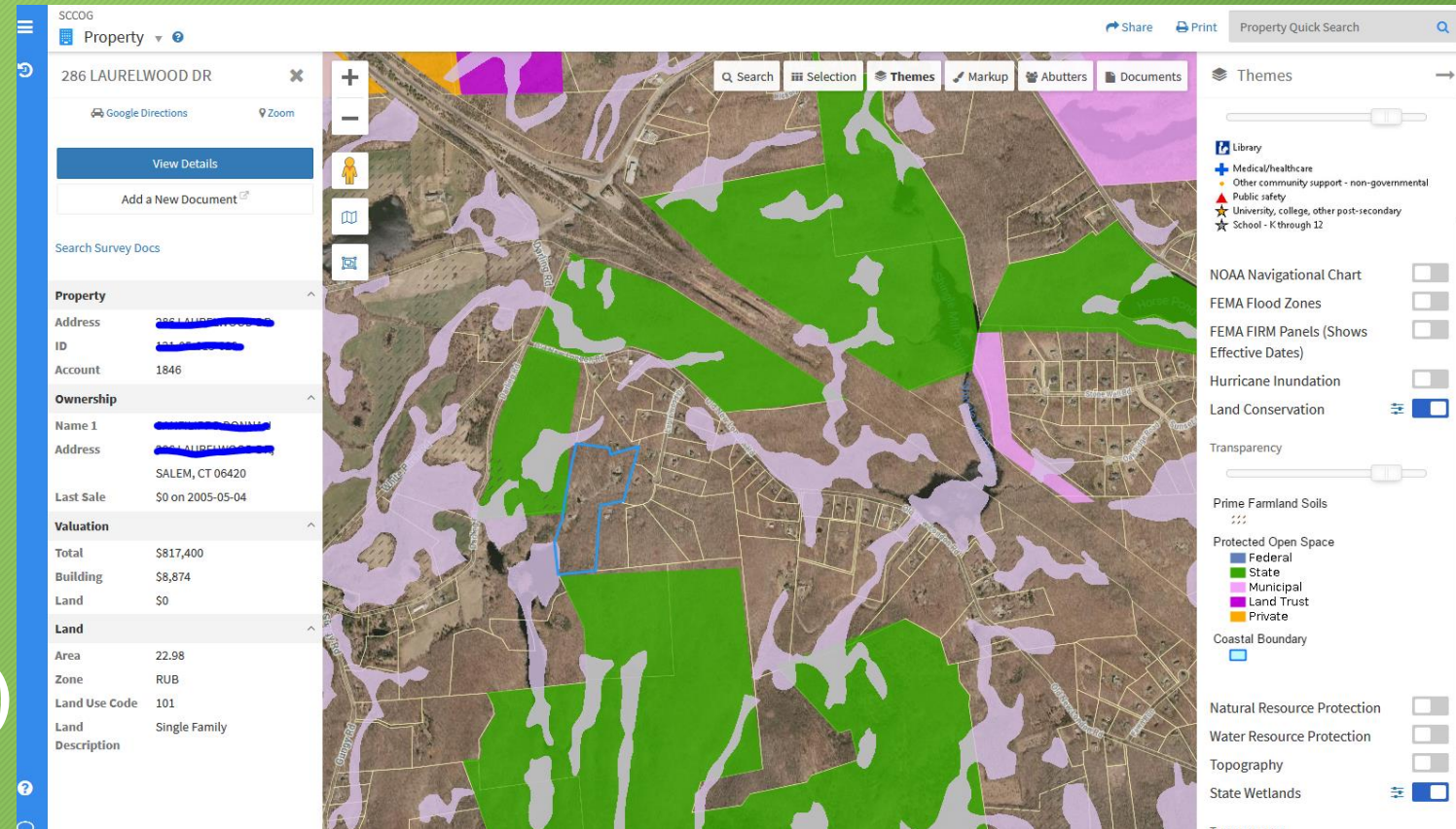
- Width refers to the full ROW
- Drag and drop road, pedestrian, and landscape elements
- Customize the buffers, building types
- Change the width of elements to utilize the available roadway
- To accommodate deep setbacks, add the setback to your “width”



<http://www.streetmix.net>

Street Mix

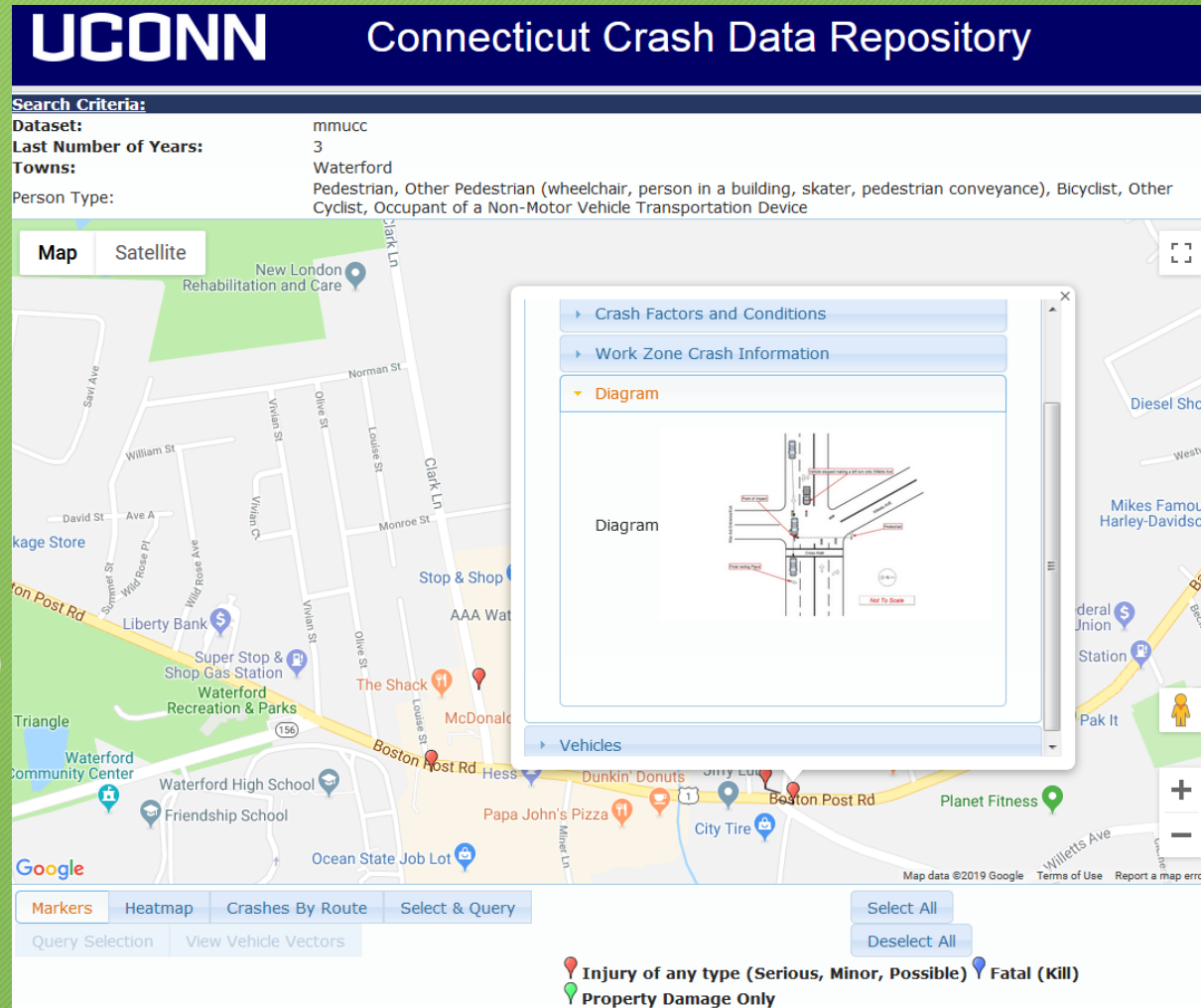
Points of Interest
Flood Zones
Open Space
NDDDB (bats/unicorns)
Topography
Wetlands
Property Owners
ROW (planning accuracy)



<http://seccog.org/gis-viewer>

SCCOG
mapping

Register to use advanced tools
>Data Query Tool
MMUCC (2015-)
3 Years of data
narrow your search by
town/road
Persons tab(bicycle,
pedestrian, other bike, other
ped, non-motorist passenger)
>>RUN_QUERY>>
View crashes on map
Select a crash to see if it's
relevant.



UCONN
CRASH

- www.ctcrash.uconn.edu/StartLogin.action

SCCOG

Other tools

- DOT's Estimating Guidelines - provided
- UCONN Magic
- SCCOG Regional Bike Ped Plan (existing conditions document to be uploaded this month to the web)
- Local Planning or Design Documents

COG Prioritization

- Deliverability
- Purpose and Need
- Public and Administrative Support (POCD, RPOCD, MTP, etc)
- Performance Measures (Federal and Regional)

Deliverability

- On time/ On Budget
 - Design completed and construction started within the funding window FY21-FY25
 - Permitting
 - ROW acquisition
 - Public/Administrative support

Questions:

Call Kate Rattan at 860.889.2324
or email at krattan@seccog.org

SCCOG

- Schedule:
 - SCCOG solicitation 2/15/19
 - Applications due 4/19/19, 3:30PM
 - Towns to present project to the EC 5/6/19
 - COG endorsement 5/22/19
 - Prioritized project list due to DOT 6/26/19
- **::black hole of uncertainty::**
 - Federal funding bill extending TAP program ?/?/??
 - DOT review of 1st priorities for deliverability
 - Authorization to proceed with design/construction

